

## DMS STORK

### GENERAL INFORMATION

**Year build:** 2013  
**Class:** BUREAU VERITAS, 1 lfc 3/3 Hull Tug,  
Unrestricted navigation, AUT-UMS  
**Flag:** St. Vincent & The Grenadines

### MAIN DIMENSIONS

**Length o.a:** 35.25 m  
**Beam o.a:** 11,60 m  
**Depth:** 5,25 m  
**Draft max. amidship:** 3.64 m  
**Tonnage:** 600 GT / 180 NT

### TANK CAPACITIES

**Fuel oil:** 374.4 m<sup>3</sup>  
**Fresh water:** 42,0 m<sup>3</sup>  
**Hydr.oil:** 3,7 m<sup>3</sup>  
**Lub oil:** 4,4 m<sup>3</sup>  
**Bilge water:** 2,2 m<sup>3</sup>  
**Dirty oil:** 4,4 m<sup>3</sup>  
**Sewage:** 23,6m<sup>3</sup>  
**Gear oil:** 2.2 m<sup>3</sup>

### PERFORMANCES (TRIALS)

**Bollard pull:** 70 tons  
**Speed:** 11.6 knots

### PROPULSION SYSTEM

**Main engines:** 2x Caterpillar 3516 B TA  
**Total power:** 3840 kW (5150 hp) at 1600 rpm  
**Propulsion:** 2x fixed pitch propellers in nozzles  
**Diameter:** 2700 mm  
**Gearbox:** Reintjes WAF 873 / 7.455 : 1  
**Bowthruster:** 295 kW (400hp), hydraulically driven



### AUXILIARY EQUIPMENT

**Auxilliary engines:** 2x Caterpillar C-9 TA  
**Generator:** Leroy Somer, LSAM 46.2 M5  
**Output:** 2x 150 kVA, 50 Hz, 230/400 V  
**Hydraulic set:** Caterpillar C18 TA, 500 kW at 2100 RPM  
**Fuel seperator:** Alfa Laval type MAB 104, 1950 ltr/hr  
**Internal FIFI System:** CO2 in the engine room  
**Transfer pumps:** Fuel 50 m<sup>3</sup>/ hr at 4.8 bar  
Fresh water 50 m<sup>3</sup>/ hr at 4.8 bar

## DMS STORK

### DECK LAY-OUT

**Anchor:** 2x 375 kg Pool (H.H.P.)

**Deck Crane:** Heila 170-4S-L, remote controlled,  
Capacity: 18,2 tons at 8,03m  
7,9 tons at 15,93m

**Anchor winch:** Ridderinkhof, CAW-H-152,  
capacity 5 tons a 10m/min.

**Ah towing winch:** Ridderinkhof AHW-H-1000,  
capacity: P= 50 tons at 10m/min  
P=100 tons at 5m/min.  
B=100 tons

**Tugger winch:** Brevini, 8 tons at 4,5m/min.

**Towing pins:** Karm Fork, 160 tons SWL

**FIFI Pump:** 1200 m<sup>3</sup>/hr

**FIFI Monitor:** 2x monitor Albach EL 377

**Stern roller:** 5000 mm x 980 mm, 100 tons SWL

**Spark arrestors:** Fitteds (external)

### ACCOMODATION

Heated and air-conditioned living spaces for 15 persons, consisting three single crew cabins and six double crew cabins, a gallery, a mess room and sanitary facilities.

### NAUTICAL AND COMMUNICATION EQUIPMENT

All systems and equipment according to GMDSS Area 3.

**searchlights:** 2x 1000W

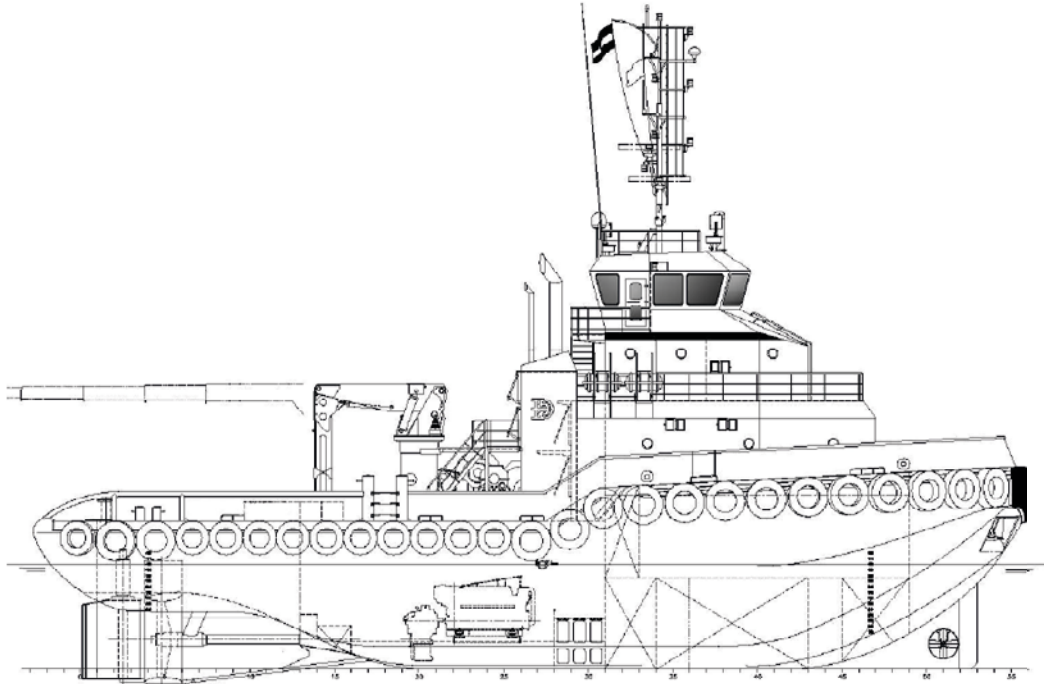
**Navigation equipment:** Magnetic compass, gyro compass, 2x radar, GPS, autopilot, echo sounder, speedlog, watch alarm, chart plotter.

**Communication:** 3x VHF, 2x handheld VHF, Navtex, Inmarsat-C, SSB, Iridium, intercom, PA-system, LRIT, AIS, SSAS.

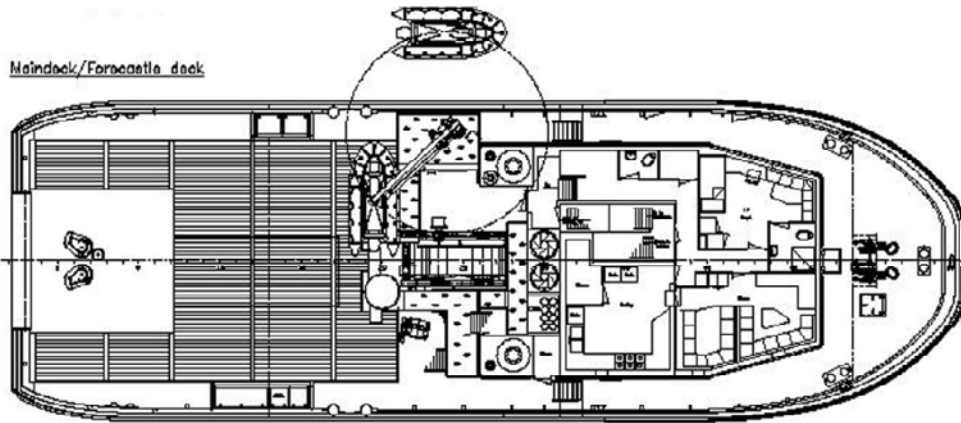
**Additional equipment:** TV antenna satellite system.



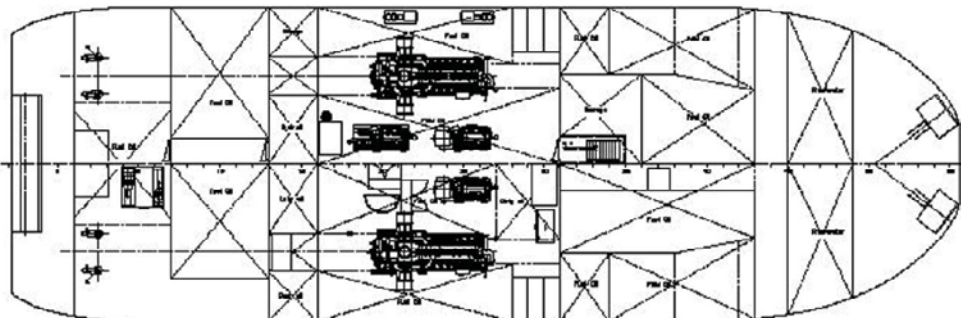
## DMS STORK



Maindeck/Forecastle deck



Below maindeck



Details of the equipment offered by DMC is done in good faith and believed to be correct but cannot be guaranteed.