



Cargo Barge Bran 4

The Bran 4 deck cargo barge is a versatile and reliable solution for efficient marine transportation. With its robust design and ample capacity, our barge ensures seamless and secure delivery of goods, enabling smooth operations and maximizing productivity.

Cargo Barge Bran 4

SPECSHEET

1. General

IMO	N/A
Callsign	N/A
Gross Tonnage	595 T
Net Tonnage	178 T
Deadweight	N/A
Year of Build	N/A
Place of Build	N/A
Flag	N/A
Port of registry	N/A
Owner	N/A

2. Dimensions

Length O.A.	55.05 m
Breadth MLD	14.00 m
Depth at side	3.60 m
Min. Draught	0.48 m
Max. Draught	2.27 m
Deck Load	10 T/m ²

3. Classification

- Bureau Veritas SJ HULL
- Unrestricted Navigation
- Unmanned Towing

4. Construction

Deck Plate Thickness	12 mm
Sheerstrake Thickness	25 mm
Number Of Compartments	21 void space

Cargo Barge Bran 4

SPECSHEET

5. Capacity

Cargo Capacity Approx. 7350 T

6. Standard outfitting

Bollards 6 x double bollards
Spud Pole Foundations 2 x at SB side
Manholes Flush type manholes
Towing Brackets 2 x SMIT brackets at the bow

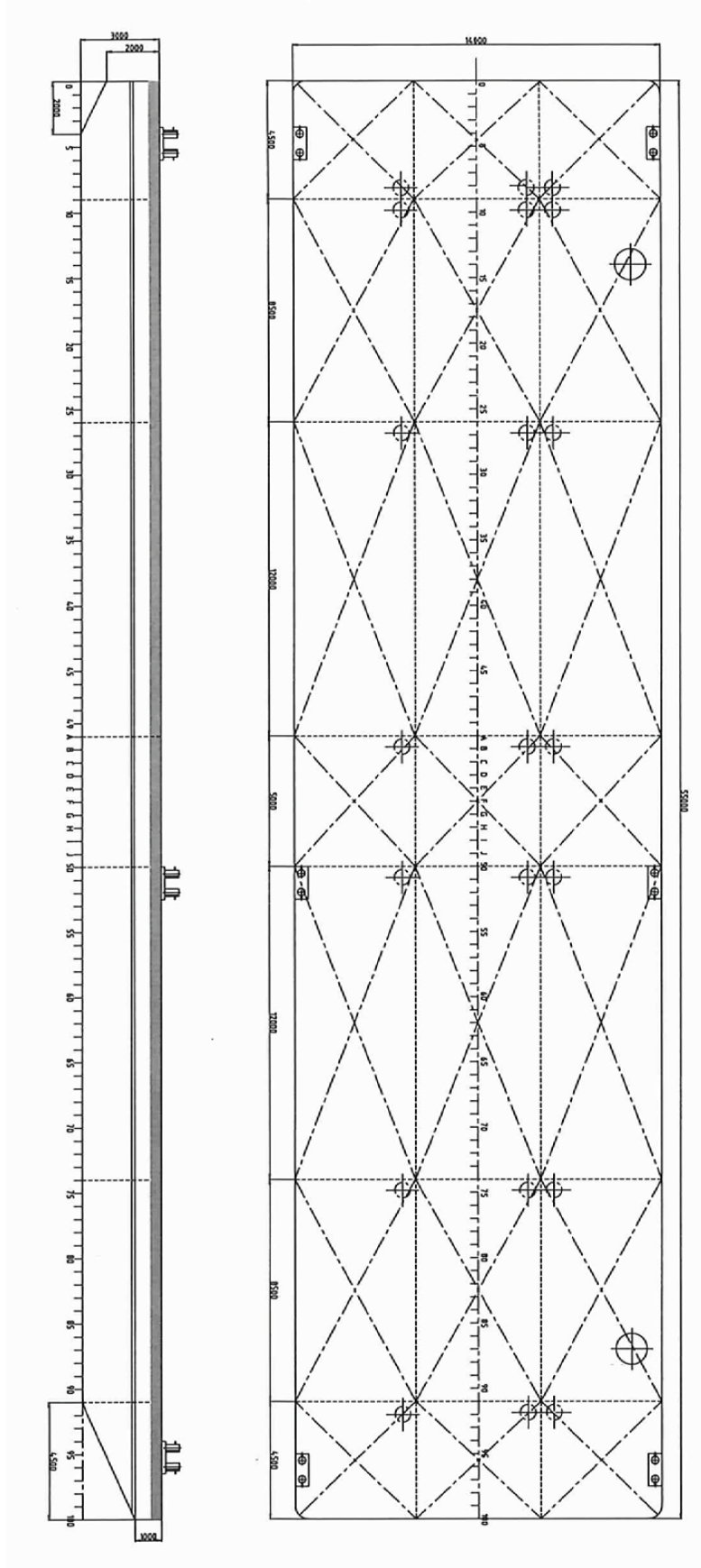
7. Options

Towing Arrangement Towing bridle with chains and emergency towing arrangement
Spud Poles Spuds with a diameter of 510 mm
Spud Handling Arrangement Hydraulic cylinders or winches
Deck Equipment Accommodation units, mooring equipment and cranes

Cargo Barge Bran 4

SPECSHEET

8. Technical drawing



Cargo Barge Bran 4



Want to know more?

GET IN TOUCH

+31 (0)20 3080 899

info@dutchmarinecontractors.com

www.dutchmarinecontractors.com

ONE COURSE FOR EVERY DIRECTION

Details of the equipment offered by DMC is done in good faith and believed to be correct but cannot be guaranteed.